



**GRIFFIN GLASSHOUSES**

GREENHOUSES OF DISTINCTION





# Contents



P. 6

INTRODUCING GRIFFIN GLASSHOUSES



P. 10

WHY GARDENERS CHOOSE GRIFFIN



P. 14

PLANNING YOUR GREENHOUSE



P. 28

GREENHOUSE COLLECTIONS



P. 42

FINISHING TOUCHES



P. 48

BRINGING YOUR GREENHOUSE TO LIFE

**Griffin Glasshouses creates beautiful bespoke glasshouses, greenhouses and orangeries for discerning gardeners in the UK and internationally.**

Whether you are buying a greenhouse to fulfil a long held ambition to “grown your own” or to replace an existing structure, a new greenhouse is usually a once in a lifetime purchase. We understand that the opportunity to create something new and special is extremely exciting but also possibly more than a little daunting.

Whatever you may have in mind, be it a relatively small but beautifully formed greenhouse or a larger more elaborate glasshouse structure, the friendly team at Griffin Glasshouses is happy to share our experience and guide you through the decisions you need to make to create your perfect greenhouse.

We hope that you will find inspiration for your greenhouse project within these pages but do bear in mind that every Griffin greenhouse is unique. This means that your dream greenhouse quite possibly doesn't exist but it will be our pleasure to design and build it especially for you.

Whether you are planning your greenhouse for the next season or the next couple of years, do get in touch because we are really looking forward to working with you and sharing your delight as your vision of the perfect greenhouse becomes a reality.




**Linda Lane**  
Managing Director

---

**Griffin Glasshouses Ltd**  
Unit 3 Dean Farm Buildings,  
Bighton Hill, Ropley,  
Hampshire, SO24 9SQ, UK.

[www.griffinglasshouses.com](http://www.griffinglasshouses.com)  
[sales@griffinglasshouses.com](mailto:sales@griffinglasshouses.com)  
Tel +44 (0)1962 772512



*“We spent 10 years trying to decide which company to build our new greenhouse! So we were extremely familiar with all the ranges, but this company put themselves out to accommodate our needs without compromising the end result.”*

MR & MRS HICKMAN, SURREY







# Introducing Griffin Glasshouses

*“I was pleased and impressed by the courtesy and good nature of all with whom I have had contact – you can feel confident that you have an excellent team.”*

MR LEIGH, DORSET











**Griffin Glasshouses creates beautiful bespoke greenhouses for discerning gardeners in the UK and internationally. We are a British family business with more than 50 years' experience in the industry and we delight in bringing each individual customer's dream greenhouse to life.**

We are extremely proud to have been selected by the National Garden Scheme to offer a collection of fixed size greenhouses for passionate gardeners with a 5% donation to the National Garden Scheme for each of these greenhouses sold.



Our founder, David Griffin, began creating glasshouses for the commercial sector in the 1960s and pioneered several ground-breaking concepts in greenhouse design. In the 1970s Griffin Glasshouses brought its expertise to private clients and Griffin became the greenhouse of choice for many individuals, estate managers and professional gardeners, particularly those seeking the highest quality and the very best option for their long-term growing needs.

Today, three members of David Griffin's family are still involved in the business – Linda, Paul and Peter. Whatever you have in mind and wherever you are in your planning process, you may be assured of our attention to your individual requirements. When you decide upon a Griffin greenhouse, you can depend upon our personal service at every stage of the process to individually design and build your perfect greenhouse. Not only that, you will enjoy the peace of mind that comes with knowing that the same people will always be on hand for any future needs you may have, long after you become the proud owner of the beautiful greenhouse you've always desired, flourishing with plants.









# Why Gardeners Choose Griffin



A VICTORIAN GREENHOUSE TO STAND THE TEST OF TIME.

Originally the gardener's cottage for the 'big house', Little Priors contains the original Victorian walled garden complete with several large greenhouses. Mr and Mrs Ramsay chose Griffin Glasshouses to replace a large greenhouse with two partitions containing cherries, kiwis and vines. Having already been replaced with a wooden structure which was rotting, this project was further complicated as there was a fall of 1m in the ground over its 23m length. Griffin also refitted all the vine supports and apparently the kiwis have been the best ever in the new greenhouse.

Regarding their decision to choose a Griffin greenhouse, Mr and Mrs Ramsay explain *"In the garden at Little Priors, we had one Victorian greenhouse sorely in need of repair. We could have replaced it with a timber structure, but decided to do as the Victorians would have done: innovate! We liked the idea of Griffin's steel and aluminium frame."*



*“The new greenhouse looks as if it belongs in the garden – it even slopes down as the old one did. But the modern materials and design mean it will last long into the future, and won’t require regular painting.”*

MR & MRS RAMSAY, SURREY



## BEAUTIFUL GREENHOUSES

Everything about your greenhouse (design, colour, finish and accessories) can be tailored to your individual requirements and unique surroundings and will be both a pleasure for you to use and an enhancing feature of your property for you to admire for many years to come.

## THE PERFECT GREENHOUSE, DESIGNED ESPECIALLY FOR YOU

**Each Griffin greenhouse is individually created for you.**

Whether you are starting to “grow your own” or need a new home for your flourishing orchid collection we can create your perfect greenhouse. Our National Garden Scheme collection is a good starting point if you are a gardening enthusiast looking to make your first greenhouse investment; this includes standard designs and sizes which can be made in any colour and personalised with a range of accessories. With our focus on bespoke design, we are often chosen for the more difficult greenhouse projects where our customers demand the highest levels of design and build quality so, whatever the style and size, you can be confident that we can deliver exactly what you have in mind – your dream greenhouse.



## THE GARDENER'S GREENHOUSE

**As a keen gardener, your priority is your plants.** We design our greenhouses to offer practical solutions to gardeners' problems. Excellent ventilation is vital and we offer the very best ventilation to avoid problems with your plants drying out or suffering the effects of humidity. Cold water straight from the tap can shock tender plant roots in summer; our guttering enables you to collect rainwater internally which can be stored in covered troughs inside the greenhouse giving you a source of untreated temperate water. We offer benches and high shelves that fold down giving you the flexibility to easily adapt your greenhouse to changes in your growing schemes. Our cold frames have been specially designed so that the lids will not lift off in high winds. And, of course, we make sure that you can fit a wheelbarrow through our doors!



## EASY TO MAINTAIN

**You want to spend your time cultivating your plants not worrying about the maintenance of your greenhouse.** With this in mind, we manufacture from aluminium and steel which is powder coated in any colour of your choice giving your greenhouse all the appeal of a traditional wooden structure but without the need to sand and re-paint it every few years. All the components we use are designed to avoid corrosion and our unique patented design provides energy-saving insulation for the aluminium glazing bar and helps reduce glass slip and water leakage problems. Not only is it very rare for any of our greenhouses to suffer from broken glass but our design also prevents the growth of moss and algae on the glass, making cleaning much easier.





### GUARANTEED FOR A LIFETIME

When you become the owner of one of our beautiful, distinctive greenhouses we offer you a lifetime structural guarantee so you can be confident that you are investing in the best. The commercial quality of our past is still evident in our production today. All our greenhouses are designed using the latest computer aided design software and are inherently strong, with every component calculated to be durable as well as aesthetically pleasing. We are proud to be a British company; our in-house design and manufacturing teams work in the same building and we only use our own installation team. This enables us to control the quality of each of our greenhouses from start to finish, ensuring that you will be delighted with the end result.



### PERSONAL SERVICE

A new greenhouse is a once in a lifetime purchase and we understand how important it is for you to get it right. With 3 family members working within the company, Griffin Glasshouses can claim to be a true family business and our customers greatly value the personal service we provide from the initial enquiry through to the finished greenhouse. We will meet with you, use our expertise to understand your specific needs and guide you through the decision process, design your greenhouse especially for you, manufacture, deliver and build it, leaving you with a beautifully functional greenhouse and a clean and tidy site. Once your greenhouse is installed, if you ever have any problems, we are happy to assist with everything from helping you with the simple task of replacing a pane of glass to moving, or even extending, your greenhouse.



### OVER 50 YEARS OF EXPERTISE

You will be in excellent company as the proud owner of a Griffin greenhouse. Griffin has been designing made to measure glasshouses and greenhouses since the early 1960s. With a history of innovating glasshouse design for the commercial sector, the company started to build greenhouses for discerning private clients including many professional gardeners in the 1970s. Now, with greenhouses installed in the UK and all over the world, Griffin continues to be the choice of many estate managers and discerning professional gardeners.





# Planning Your Greenhouse



## THE KENTISH ALPS IN A GREENHOUSE

On a high ridge in mid-Kent there is one of the most unusual greenhouse features in the country – an ‘alpine’ outcrop with a regular stream of fresh air, sunshine and shade.

Dr Adrian Cooper’s Griffin greenhouse has been specifically designed to accommodate an 8-ton Kentish ragstone mound that is home to some of the rarest alpine plants growing in Britain.

*“Working with Griffin Glasshouses, we designed the 16’ x 24’ greenhouse so that the ventilation would produce a constant cross stream of fresh air. To try to further emulate natural alpine conditions the structure is deliberately sited to catch maximum sunlight until the afternoon when, as would happen in Switzerland, it dips into shade,”* explains Dr Cooper, who is a geo-chemist.

His Kentish alpine house is home to more than 400 plants from his collection of greater than 2000. They have been his life-long passion. Some of the more rare varieties have been skilfully grown by him from seed and cuttings, others come from friends and specialist growers throughout Europe.

*“It’s really a giant rockery,”* he explains. *“I knew the conditions I wanted and Griffin Glasshouses’ Technical Director, Paul Smith, quickly and correctly interpreted them into the final design. It took about two weeks to erect and a major part of its success is the controlled ventilation.”*

There is a massive roller blind shade on the south facing roof and side plus two full-length roof vents and two full-length side vents. These are mechanically operated and further temperature control is achieved by two fully opening doors at the two gable ends of the greenhouse.

All the inside paths are paved with reclaimed York stone and the greenhouse sits on a 2.5 foot high wall built using reclaimed bricks with lime mortar.

Griffin Glasshouses’ Paul Smith comments: *“It has been a fascinating challenge to try and replicate a high altitude location using just positioning, ventilation and shading. This is a traditional looking greenhouse but is constructed using the very latest materials so that it is virtually maintenance free.”*





*“I am absolutely thrilled with it.  
It was a very specific design and Griffin  
Glasshouses exceeded all the expectations.”*

DR COOPER, KENT



**A new glasshouse, greenhouse or orangery is always an exciting purchase.**

Whether you are replacing an existing structure or fulfilling a long held dream to “grow your own”, it is important to consider your options carefully so that you can be sure that you are buying the perfect greenhouse for you and your individual situation. By asking yourself these questions, you can be confident that nothing important is overlooked and that you have considered the most important decisions you need to make to turn your dream greenhouse into a reality.



## 1. WHAT IS THE BEST POSITION FOR MY GARDEN?

**The aim of a greenhouse is to capture as much light, and therefore heat, as possible.** A good greenhouse makes the best use of the available sun all year round, not just the summer, so it is important to think of the position of your greenhouse in relation to the sun and any buildings or trees that are likely to cast shadows.

**The best scenario is to build a free standing greenhouse with its longest axis running east – west, but this is not always possible.**

If you do not have the space for a free standing structure, you may want to consider a lean to or 3/4 span greenhouse, where the structure is attached to a wall. The wall acts as a large store for the sun’s heat and collects heat during the day which it emits at night. The best position for a lean to or 3/4 span greenhouse is on a south facing wall.

While this sounds fairly simple, keeping track of where trees, walls and other structures cast their shadows can make life a little more complicated. Also trees need to be thought of as sources of falling leaves, twigs and even branches. While a few leaves are merely a yearly annoyance to be cleaned up, a large branch can cause more problems.

**It’s also advisable to consider how far from the house a greenhouse is. Too far and you won’t use it as much.**

Of course you may not have all these options to consider but we can still help by suggesting alternative designs that make the best use of your particular situation.





## 2. WHAT DO I WANT TO GROW AND HOW MIGHT THIS CHANGE IN THE FUTURE?

**The design of your greenhouse should take into account the type of crops you want to grow and also how this might change over time.** If you are planning to grow climbing plants or tomatoes you should also think about the height of the greenhouse at the eaves and ridge.

Most people find that they need more space than they originally thought once they start to use their greenhouses and see the growing potential for themselves, so it's always best to overestimate rather than underestimate your usage.

The staging in a Griffin greenhouse is made especially for you and can be designed to be easily adapted by you to accommodate changes in your planting plans. In addition, Griffin offers the best ventilation systems and a full range of accessories (irrigation systems, heating, lighting and shading) giving you as much control as possible over the environment for your plants.





*“How delighted we are with our glasshouse and how glad we are that we selected you to build and install it for us. It is now adorned with some exotic plants and cuttings and is much admired by all who visit us at The Old Dairy.”*

MRS CARNWATH, DEVON

### 3. WHAT STYLE OF GREENHOUSE IS RIGHT FOR ME?

You will probably have a good idea of the kind of design that appeals to you, however it is also important to consider the style of greenhouse with regard to your house or other structures nearby. Depending on the look you wish to create from traditional Victorian orangery to more contemporary glasshouse, we can tailor the greenhouse to suit your exact requirements with a full range of roof pitches, glass widths, colours, finishes and accessories. Because we design every greenhouse individually, with Griffin the possibilities really are endless so you are sure to be delighted with the end result – your perfect greenhouse.



### 4. HOW MUCH CAN I AFFORD TO SPEND?

Budget is clearly a very personal concern, but probably the most important thing, regardless of your budget is to ensure that you get good value for money. A greenhouse is a much anticipated one-off purchase so it is important to get it right.

The quality and inherent strength of the greenhouse structure varies considerably from one supplier to another as does the amount of ventilation and other important features such as water storage solutions and adjustable shelving. With a Griffin greenhouse you are guaranteed a strong, high quality and fully functional greenhouse.

In terms of size, it generally makes sense to opt for the largest greenhouse you can afford as typically the bigger the structure, the more growing space you get for your money. At Griffin, because we have so many design options available to us, we are always happy to work with you to design the best greenhouse possible for your particular budget.







## 5. DO I NEED PLANNING CONSENT?

If you live in a listed building or within an area of outstanding natural beauty, a National Park or conservation area then you will need planning consent prior to building or replacing your greenhouse or orangery. We can undertake this aspect of the process for you. Usually we have no problems with planning but it is often worth just a quick call to your local planning office to put your mind at rest.







## 6. HOW DO I MAXIMISE THE VENTILATION?

**Good ventilation is vital because it enables you to control the environment in the greenhouse so that you can get the best from your crops.**

We design our greenhouses to maximise ventilation using the very best ventilation systems in the industry. Our ridge and eaves gutter design means that we can tailor the ventilation to your exact requirements; full length ventilators can be installed to both the side and roof to maximise the openings and provide a through-flow of air.

Depending on your preference, we offer a range of hand operated and fully automatic ventilation systems. Automatic vent units are very popular because they open and close by themselves giving you peace of mind that your greenhouse will always be fully ventilated, even in your absence.

Where there is no electricity supply and typically in smaller greenhouses, we tend to use Bayliss hydrauliccheck autovents. These are automatic ventilators that open and close using energy from the warmth of the sun or the surrounding air. The hotter it gets, the wider the autovent opens and as the temperature cools, the autovent closes.

If an electricity supply is available, thermostatically controlled electric rack and pinion vent opening units can be used. The thermostat enables you to pre-set the temperature for the vents to open and close, giving you even more control over your greenhouse environment.



## 7. HOW WILL I MANAGE THE WATERING?

**A mains tap within the greenhouse is the most obvious way to provide water for your plants. This can be used to fill a watering can or to connect a hose and lance.**

If you want to make the task of watering easier or if you need peace of mind that your plants will be watered even if you are away on holiday for two weeks at the height of summer, you may want to consider an automatic irrigation system. The simplest way to achieve this is to use a battery operated timing device connected to the tap with a hose feeding a drip irrigation system.

You may want to consider an overhead mist system if your plants require a particularly humid environment. If you have a large greenhouse and lots of different crops, a computer controlled electric zoned irrigation system is an option.

Whilst a mains tap has many benefits, it may prove expensive to arrange if the greenhouse is a long way from your mains supply.

Whether you have a mains tap or not, with hose pipe bans and the increasing awareness about environmental issues it makes sense to conserve water by collecting and reusing as much rainwater as possible. When you think how much water you can store within the greenhouse for instant use it becomes a very practical solution, especially as the water is untreated and always at the right temperature for your plants.

We suggest the use of large troughs, normally under benching, to store rainwater collected internally by our greenhouse guttering. Our 3m x 0.6m x 0.6m lidded tank stores over 1000 litres (250 gallons) of clean soft rainwater. To water your plants, simply use a hand pump to fill a watering can. Alternatively, if you have an electricity supply in your greenhouse, you may opt to use an electric pump with either an automated irrigation system or a manual hose and lance.







*“It was a delight to meet and deal with such an efficient family firm. We were most impressed with the way that everything arrived on the site down to the last nut, present and correct. Everything ran to the timetable you gave, which is most unusual these days. Needless to say if any of our friends need a glasshouse, we will know where to direct them.”*

MR & MRS TIBBS, WEST SUSSEX

## 8. DO I NEED AN ELECTRICITY SUPPLY?

An electricity supply is not vital in a greenhouse, though if you do want to run an electrical appliance, for example an electric heater to keep it frost free over the cold winter months or early spring to give seedlings a head start, then a fully waterproof electrical supply is required.

If you decide to run electricity to your greenhouse, it opens up other possibilities. For example, you can specify an electric water pump or fully automatic electric ventilation - no more racing to open the vents on a hot morning or to close them during a sudden cold downpour. All you have to do is set the required temperature and the thermostatically controlled system will do all the work for you.

Another option is lighting. Not everyone wants to pot up all night, but with lights you can at least extend the time you do spend in your greenhouse.

Our customers find many other uses for an electricity supply – among the items we have found when we’ve returned to visit are propagation benches, radios, kettles and even an exercise bike and a beer fridge!



## 9. WILL I BE ABLE TO GET A WHEELBARROW THROUGH THE DOOR?

This may seem obvious, but you would be amazed at how many people overlook the practical issue of access to their greenhouse. All Griffin greenhouses have doors with an opening wide enough to allow access for a wheelbarrow or wheelchair (unless of course we are replacing an existing greenhouse with a narrower existing door width). We make our own double glazed aluminium doors which are colour-matched to the greenhouse. You can choose single or double doors and we can tailor any door to your specific requirement.





## 10. WHAT ARE THE MAINTENANCE COSTS?

As with any major purchase decision, it is important to consider not only the initial cost but also the ongoing cost of ownership of your greenhouse. As well as the financial cost, think about the time needed to maintain your greenhouse, whether this involves doing it yourself or organising somebody to work on your behalf.

Griffin's greenhouses are designed to be beautiful and to last a lifetime. Our greenhouses are manufactured in aluminium and steel, which is powder coated in any colour of your choice and designed to be resistant to corrosion. Unlike wooden structures that require sanding and staining or repainting every few years, all you need to do to keep your Griffin greenhouse looking as good as new is to power wash it inside and out and oil the door lock and pinions if fitted.

In the unlikely event that a pane of glass breaks, replacing it is very straightforward and, of course, we are always on hand and more than happy to give you our help and advice on any aspect of maintenance.

*“Despite assurances given to us at the time, our old wood frame greenhouse rotted and became unusable. We were determined to replace it with an aluminium one and Griffin Glasshouses ticked all the right boxes,”*

MR & MRS T, CHELSEA

## 11. WHAT IF I DON'T WANT A "NORMAL" GREENHOUSE?

Perhaps you really want a greenhouse but have a particular problem with the size or layout of your property and so you are struggling to find a solution. Maybe you have an idea for a glass structure that is not a simple, straightforward glasshouse and you are not even intending to use it for plants.

Griffin can design whatever you want – large or small, simple or more involved – we even design greenhouses for sloping sites or to go around corners.

Whilst our main business is greenhouses, this doesn't mean that we can't design something to solve a problem for you. Whether you want a rainproof corridor to join different buildings together or a room to act as a storm porch, one of our glass structures can often be the answer. An orangery can be the ideal substitute for a freestanding greenhouse if you have a very small garden or even no garden at all.

It's important to remember that our greenhouses, glasshouses and orangeries are single glazed so will, under certain conditions, form condensation. Our patented capping system acts as an insulator to our glazing bars and any condensation is channelled away within the structure to the exterior. Even so, although we can design a useful 'room' for you, we do not recommend that you use one of our glasshouses as a conservatory.

## 12. WHAT IF I CHANGE MY MIND LATER?

When you buy from Griffin, you are assured of our personal service. If you need to completely change the internal staging or if you want to add cold frames, shading, automatic irrigation or electric vents we will be more than happy to help. In the unlikely event that you decide that you would like to extend or even move your greenhouse completely, we can do that for you too.

















# Greenhouse Collections



## FLOURISHING SEEDLINGS AT STONEHEALED FARM

Listed as one of the top 25 Sussex gardens to see, Stonehealed Farm opens for charity under the National Garden Scheme and invites visitors to experience its wonderful rural setting. Adding to the natural beauty of Stonehealed Farm now stands a 4.9m x 2.6m Sage greenhouse from Griffin Glasshouses' National Garden Scheme collection.

*"The greenhouse has only recently been finished. I grow lots of vegetables from seeds. I have currently got tomatoes, chillies and basil growing plus some pelargonium and salvia plants and cuttings. I am also trying out a bougainvillea, something I have always wanted. The new greenhouse will be brilliant for overwintering my many tender plants,"* explains owner, Fiona Smith.

*"We chose a Griffin free standing greenhouse because of the excellent quality of the product. The service we received was very friendly and personal. The fact it has a National Garden Scheme connection was a bonus."* MRS SMITH, SUSSEX

The Sage greenhouse is produced in the Victorian style with a steeply-pitched roof, narrow glazing panels, decorative spandrels inside and finished with traditionally styled ridge fittings and finials. It is made by Griffin using the highest quality, maintenance free aluminium that is specifically designed to give the appearance of traditional wood.

*"I am delighted with the greenhouse. It is both functional and beautiful. The ventilation is superb. I can be out all day without any worries. During the recent very hot weather, the temperature inside remains the same as outside even with the door kept shut. The hinged staging is such a simple and clever idea making the space even more versatile,"* adds Fiona.







*“The Griffin greenhouse is perfect for our requirements. I was able to specify every feature and so in essence, I have a unique, bespoke greenhouse for an off the peg price.”*

MRS FARRELL, OXFORD





### THE PERFECT GREENHOUSE DESIGNED FOR YOU

Your new greenhouse is a once in a lifetime purchase and will enhance your property and lifestyle for years to come. Depending on the look you wish to create, from traditional orangery to modern glasshouse, we can tailor your greenhouse to your exact requirements with a range of roof pitches, glass widths and colours, as well as all the accessories you are ever likely to need.

There are standard options of course and fixed configurations in our National Garden Scheme collection, but the reason we offer you so much choice is because we want to create your perfect greenhouse. And you needn't worry about all of this becoming overwhelming: following a one to one consultation at your home our designers will guide you through the process to ensure that we create something that will give you joy for years to come.



### BUILT TO YOUR SPECIFICATION AND BUDGET

Only you know the design features that are most important to you. You may know exactly what you're looking for; perhaps you know what you need your greenhouse to do but are unsure of the features you require. Either way our designers will be on hand to help you relax and enjoy the process.

And because our greenhouses are bespoke, we can work around tricky sites, specific functionality and incorporate the design features that matter to you.

*“Griffin managed the logistics brilliantly and I believe they were the only company that were able to provide the service and the quality I was after. Needless to say our client was delighted with the greenhouse and we look forward to being able to work with Griffin again.”*

DARREN HAWKES, GARDEN DESIGNER, CORNWALL



### A RANGE OF FINISHES

Depending on your preference we offer a range of glazing materials (the most common being 4mm toughened safety glass) and finishes. You have the option of single or double doors, colour matched to your greenhouse and tailored to your needs, with an opening wide enough for a wheelbarrow or wheelchair. We can powder coat your greenhouse in any colour and customers often ask us to match a particular colour. So, whilst most of our customers opt for the muted tones of pebble, ivory or moss, if you want us to make yours fiery red to match your chilli collection or magenta to tie in with your prized collection of pelargoniums, then we can certainly do that.



## ALL THE BEAUTY OF WOOD WITHOUT THE DRAWBACKS

For strength and ease of maintenance we manufacture from aluminium and hot dipped galvanized steel. Our structures are designed to prevent corrosion and last a lifetime. Unlike wood, which requires sanding and painting or staining every few years, our greenhouses simply need to be power washed to restore them to their beautiful best.



## GUARANTEED FOR LIFE

You can be confident that you are investing in the highest quality with a Griffin greenhouse, backed by a lifetime structural guarantee. Every greenhouse benefits from our unique patented capping system, which insulates the glazing bar overcoming the heat-loss problems traditionally associated with aluminium structures and reducing glass slip and water leakage. Because our greenhouses are inherently strong, it is extremely unlikely for a pane of glass to break, even in high winds. Our system also prevents the growth of moss and algae on the glass, making cleaning even easier.

*“My wife and I are delighted with it. The design is exactly what we envisaged and the construction appears so robust that it will hopefully last indefinitely.”*

MR GORE, BUCKS

## THE ULTIMATE IN VENTILATION

The importance of ventilation cannot be overestimated. To create the best possible environment for your plants it is essential to maximise the ventilation and have a good through-flow of air. We design your greenhouse to provide the gold standard in ventilation, using the very best ventilation systems in the industry.

Our ridge and eaves gutter design means that we can tailor the ventilation to your exact requirements and full-length ventilators can be installed to both the side and roof.

Depending on your preference, we offer a range of hand operated and fully automatic ventilation systems. Automatic vent units are very popular because they open and close by themselves giving you peace of mind that your greenhouse will always be fully ventilated, even when you are away on holiday in the height of summer.

Where there is no electricity supply and typically in smaller greenhouses, we tend to use Bayliss hydraulicheck autovents. These are automatic ventilators that open and close using energy from the warmth of the sun or the surrounding air. The hotter it gets, the wider the autovent opens and as the temperature cools, the autovent closes.

If an electricity supply is available, thermostatically controlled electric rack and pinion vent opening units can be used. The thermostat enables you to pre-set the temperature for the vents to open and close, giving you even more control over your greenhouse environment.



## THE GARDENER'S GREENHOUSE

For more than 50 years Griffin has created beautiful greenhouses for passionate gardeners. Our long-standing relationships with our customers, based on mutual trust and respect, have given us the opportunity to listen and really understand their needs enabling us to continue to innovate what we offer to meet – and often exceed - both your needs as a gardener and, most importantly, those of your plants.

Griffin's greenhouses offer these gardener-friendly features:

The beauty of wood without the maintenance headaches.

Maximum ventilation so that your plants won't dry out or suffer the effects of humidity.



Large covered water storage tanks so that you can store clean soft rainwater inside your greenhouse for watering your plants without shocking the roots at the height of summer.

Flexible shelving and benching to accommodate changes to your growing schemes.

Cold frames with lids especially designed not to lift out by themselves in high winds.

Doors designed to fit a wheelbarrow.

Each and every greenhouse is designed to respond to the needs of each individual gardener. So whether you need a warm, humid environment for your orchids, a cool shady spot for your alpiners or wires to support your peaches or grapes, we can create the perfect setting for your plants.

*“I wanted a customised and high quality greenhouse and the Griffin range ticked all the right boxes in terms of authentic styling, cost and low maintenance”*

MRS WHITTAKER, NATIONAL COLLECTION  
OF CRASSULA, PLANT HERITAGE



## FREE STANDING

Each of our beautiful free standing greenhouses is designed especially for you and can be made in any colour. The choice is yours - Victorian or contemporary styling, with or without a porch, attractive finials or none at all. We can incorporate different glass widths and roof pitches to mirror or match surrounding buildings as well as a full range of accessories to personalise your perfect greenhouse.

The minimum width for one of our free standing greenhouses is 2m (6.5 feet); the maximum is over 6m (20 feet) wide in a single span.







### LEAN TO

A lean to greenhouse or orangery is a wonderful option if you have a high wall. The wall collects and stores the sun's heat during the day and then emits this at night which helps maintain the greenhouse temperature. Our beautifully designed lean to greenhouses and orangeries usually have full length ventilation to the ridge as well as side ventilators to maximise air circulation. The size of a lean to greenhouse is governed by the height of the high wall. In general, for a width of 2.4m (8 feet) the wall will need to be at least 3.2m (10 feet 6 inches) high. If your wall isn't high enough, then a 3/4 span (also known as an offset ridge) is a very attractive alternative.

### 3/4 SPAN

If you want to build your greenhouse or orangery against a wall, but it's not high enough for a lean to, then a 3/4 span (or offset ridge) is an excellent option. A 3/4 span greenhouse is attached to the wall using a valley gutter that is strong and wide enough to walk in for ease of maintenance. You may have an idea for the perfect greenhouse but a less than perfect site. Our impressive greenhouses can be designed for slopes, to look "straight" in an "out of square" garden and even to go around corners! If you have a preference for an attractive 3/4 span design but would like a free standing greenhouse, we can do that too.

*"Their structures are well designed with light glazing bars due to the sub frame design. This means that they look as close to the traditional timber lean-to greenhouses as possible, they are not fussy and are aesthetically pleasing. The price we think also represents good value."*

MR STRATTON, NORTH YORKSHIRE





## NATIONAL GARDEN SCHEME COLLECTION

The National Garden Scheme has selected Griffin Glasshouses as its partner for its first ever collection of free standing greenhouses for the keen gardener.

The National Garden Scheme collection represents excellent value for money, features beautiful design and includes a 5% donation of the proceeds from the sale of every greenhouse in this collection to the National Garden Scheme.

With more and more of our clients showing and viewing gardens for charity under the National Garden Scheme, we recognise its importance to the gardening community and the fantastic contribution it makes by donating over £2.5 million each year to cancer, nursing and gardening charities.

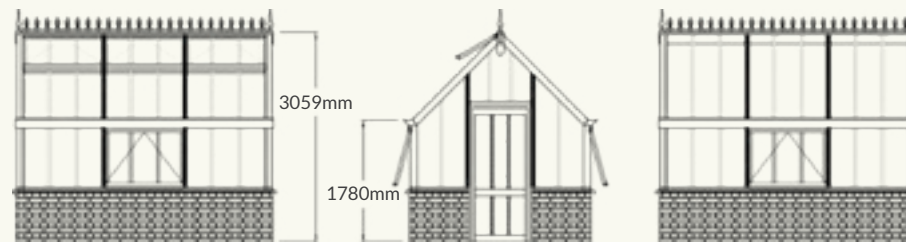
A number of our customers, some recent and others with greenhouses of more than 20 years old, open their beautiful gardens to the public under the National Garden Scheme. Examples are Bolehyde Manor, Wilts; Bramdean House, Hants; Dean House, Kilmeston, Hants; Coton Manor, Northants and Stonehealed Farm, Sussex.

Our National Garden Scheme collection includes 8 designs, from 2.6m x 3.7m up to 4.2m x 11.3m. These greenhouses have been designed with beautiful proportions and a traditional interior with hidden fixings to emulate the appearance of wood. Each greenhouse can be personalised with a range of accessories and made in any colour of your choice.



### SORREL 2.6m x 3.7m

This traditional style greenhouse with a gable door entrance is perfect for the keen gardener who wants to make the most of limited garden space.

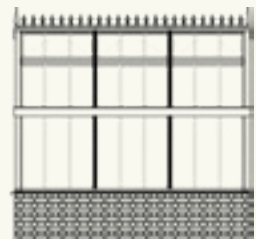
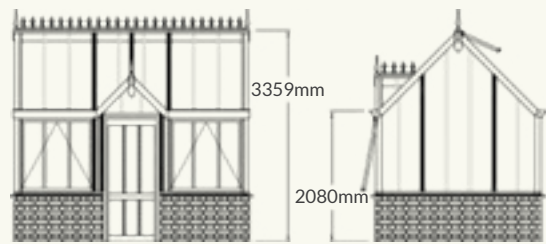






THYME *2.6m x 3.7m*

With an attractive feature porch on the long side, Thyme offers plenty of space for staging and beds.

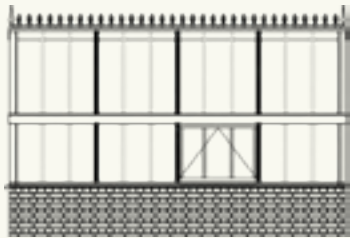
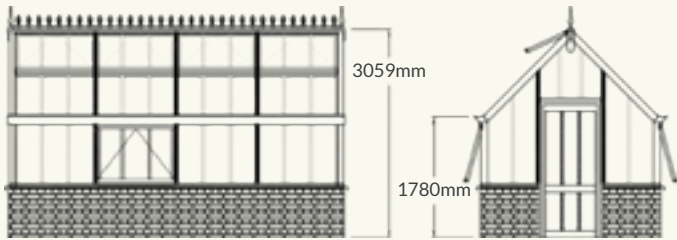






### FENNEL 2.6m x 4.9m

Longer than Sorrel, this traditional greenhouse has even more room for staging and growing from the ground.

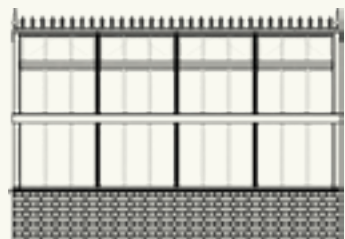
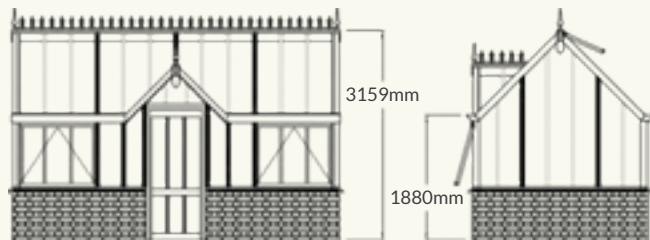






### SAGE 2.6m x 4.9m

This pretty greenhouse with a feature porch offers you plenty of space for your plants with many options for shelves, benches and beds.

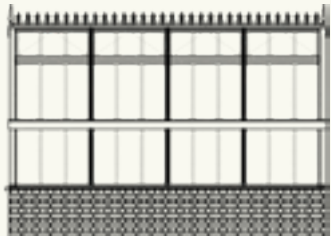
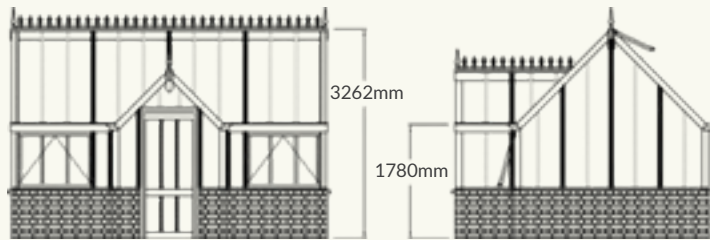






## ROSEMARY *3m x 4.9m*

Rosemary has a full porch and is wider than Sage, offering even greater flexibility for your planting schemes.

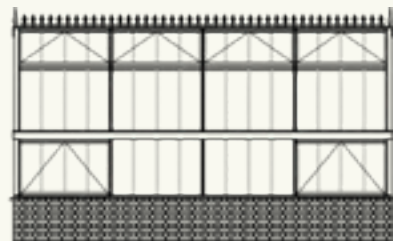
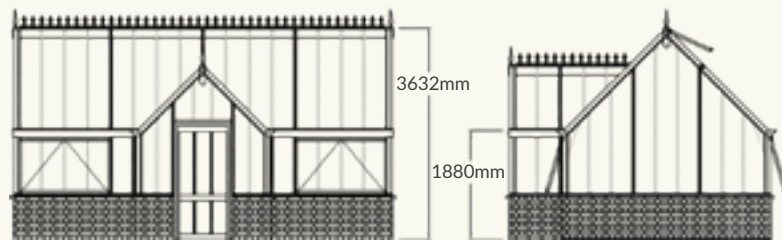






### LAVENDER 3.6m x 6.5m

Both wider and longer than Rosemary, Lavender provides more space for the keen gardener, offering a greater variety of internal layout options, perfect for year-round growing.

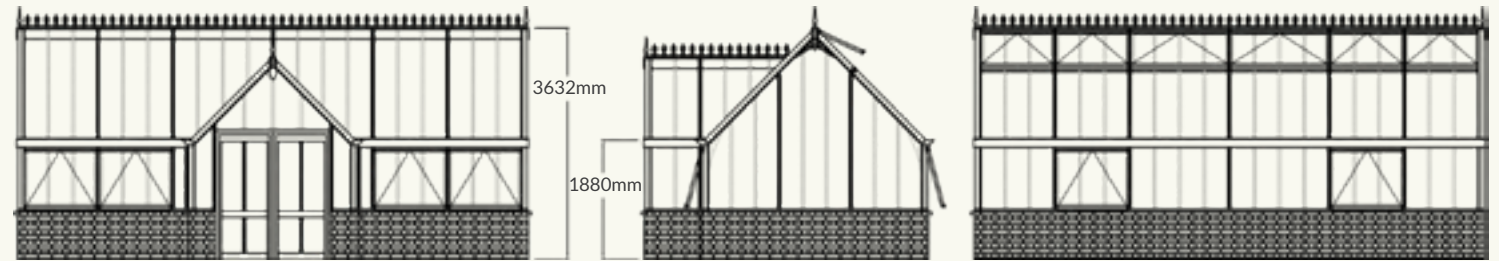






### TARRAGON *3.6m x 8.1m*

With a double door entrance and very generous interior there's plenty of room for growing and even entertaining. Adding a partition enables you to create different climate zones within the greenhouse.

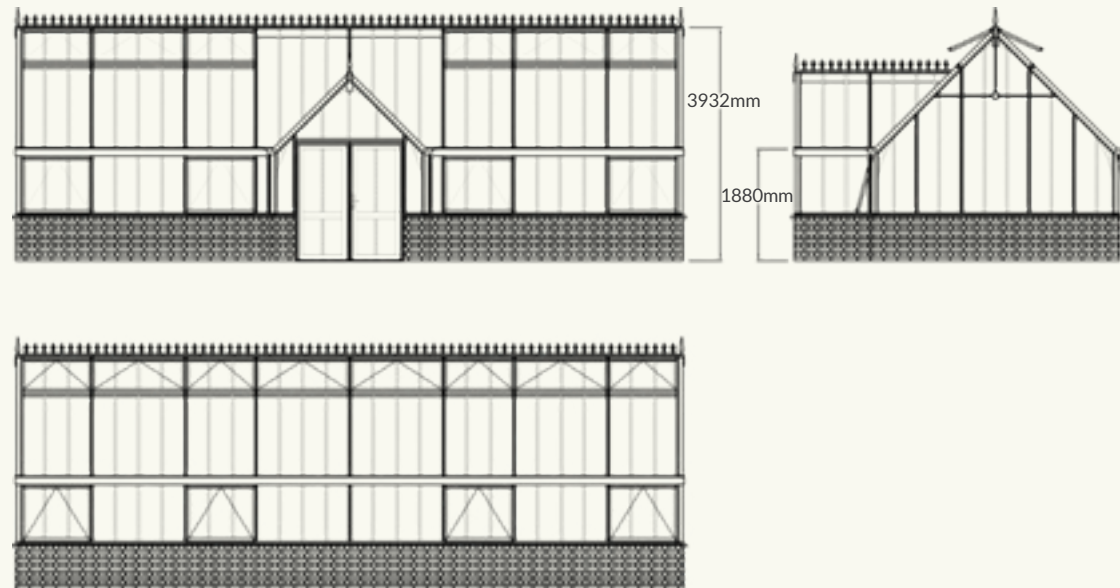






### CORIANDEr 4.2m x 11.3m

A beautiful greenhouse with a full porch and double door, Coriander is large enough for you to indulge all your planting passions. The extra width lends itself to the addition of a door at the gable end and you may also wish to add a partition for a flexible growing environment.





# Finishing Touches



## HORTICULTURE THRIVES AT THE BISHOP'S PALACE

With its traditional Victorian-style architectural features, the Griffin Glasshouses' greenhouse at The Bishop's Palace in Wells is attracting local schools, community and special needs groups, encouraging them to become involved in vegetable and cut flower propagation as well as growing their own tomatoes and cucumbers.

James Cross, Head Gardener, explains *"We use it for propagation and share it with a community garden group which includes locals, schools and special needs groups in Wells. It is great that so many people can enjoy our beautiful greenhouse. We hope to utilise the back wall for training fruit in the future."*

Bespoke in design and standing 3.5m tall, 4m wide and 16m in length, the classic Victorian design of the greenhouse was a major draw for The Bishop's Palace. To ensure authenticity in the design features of its greenhouses, Griffin Glasshouses' Technical Director has visited original Victorian greenhouses at stately homes throughout the UK.

*"The greenhouse's Victorian styling really appealed to us and the cold frames in front are extremely useful. It is also low maintenance and is custom designed to our specific requirements."*

MR CROSS, HEAD GARDENER, THE BISHOP'S PALACE, WELLS









### EVERYTHING A GARDENER NEEDS

Every greenhouse is unique and so are your needs as a gardener when it comes to creating the perfect environment for your plants and accessorising your greenhouse in style. Whatever your chosen style and planting plans, we can manufacture or source a full range of accessories on your behalf or put you in touch with other recommended suppliers. From propagators to potting benches and floor grates to grow lights, we will ensure that your greenhouse is fully equipped with everything you need and share the benefit of our advice and experience to help you choose (and spend) wisely.



### BENCHING AND SHELVING

Whether you want to grow vegetables, flowers, climbers or fruit trees (or a combination of these) well-designed staging enables you to maximise the growing space available whilst making tending to your crops as easy as possible.

Based on your individual planting plans and the internal space available, we will use our experience to design, build and install staging in a contemporary or traditional Victorian style to give you the maximum practical growing area. Powder coated in a colour to match or complement your greenhouse, our heavy duty aluminium staging is strong, easy to clean and designed to prevent corrosion.

Your greenhouse is built to last a lifetime and it is likely that your planting plans will change over time. We give you the option to make changes yourself as you alter your growing schemes with benching and shelves that fold away offering you an additional layer of growing space when you need it most.





## COLD FRAMES

Cold frames are particularly useful if you want to extend the growing season, overwinter or harden off plants. Cold frames can be integrated into the design of your greenhouse, typically either side of a porch or to the side of the greenhouse, or they can stand alone. A special feature of Griffin cold frames is the lifting toughened glass lids that have been cleverly designed not to lift out by themselves in high winds.

*“The new cold frames have proved to be far more effective than the old lids which drove us mad in high winds, blowing all over the garden and were so inflexible when you needed to have them half open when hardening off seedlings.”*

MR & MRS HARMAN, KENT



## HEATING

You may need to heat your greenhouse to keep it frost free over the winter or if you want to protect early seedlings during the colder spring nights. We can advise on any aspect of heating and supply heating systems to meet your needs taking into account your planting plans, the size and type of greenhouse, the temperature to be maintained and the expected lowest outside temperature.











## IRRIGATION

To make the task of watering easier, we offer you the very best range of irrigation equipment. Depending on your requirements and budget, you have the choice of simple irrigation systems, computer controlled drip irrigation systems and tailor-made manual, automatic or overhead mist systems.



## INTERNAL WATER STORAGE

It makes perfect sense for you to use rainwater for watering and our guttering enables you to collect rainwater internally that can be stored in large tanks inside the greenhouse. Our 3m x 0.6m x 0.6m lidded tank stores over 1000 litres (250 gallons) of clean soft rainwater, providing a source of untreated water that is always at the right temperature for your plants. The tanks are usually sunk under benches but can also sit at floor level and have protective lids to stop the growth of algae. Simply use a hand pump to fill a watering can or if you have electricity in your greenhouse, you can connect an electric pump so that this water can be used with a hand-held lance or automatic irrigation system.



## SHADING

Unless you are planning to grow plants requiring shade such as alpines or orchids, we advise you to wait for a season to see whether shading is necessary. We find that most of our customers don't require shading because of the excellent ventilation provided by our greenhouses.

If shading is required, we can supply internal roller blinds that are manually operated using a spring loaded pulley system with a winch. They reflect sunlight out of the building giving up to 75% shade and provide a thermal ceiling to conserve heat during the winter months. This system has been commercially proven and the fabric is less liable to damage than externally fitted blinds. It can be washed with a sponge to ensure a disease free environment.



# Bringing Your Greenhouse to Life



## GREENHOUSE HELPS TRANSFORM GARDEN INTO A PLACE OF RETREAT

Toby Buckland of BBC Gardeners' World designed and project managed the memorial garden for The Woodlands Garden Trust at RM Condor, Arbroath which features a large Griffin greenhouse.

The Woodlands Garden project is an ambitious undertaking that seeks to convert a special part of Royal Marines Condor – home to the 800 men of 45 Commando Royal Marines – into a focal point for remembrance and reflection for the unit, past and present.

The garden which is situated within a Royal Marines establishment is open to friends and family of the deceased.

Captain Robertson, Royal Marines, explains, *“Back in the 1940-70s the garden was a working vegetable garden. The idea was to turn a muddy field into a calm and reflective environment that men, families and friends of 45 Commando Royal Marines can enjoy and relax in.”*

*It is primarily used to propagate plants and flowers and we have recently added a raised stone bed and heating within it. The greenhouse has been used for private functions by military personnel and is open to invited local community groups to enjoy. Having it has helped transform the garden into a place of retreat.”*



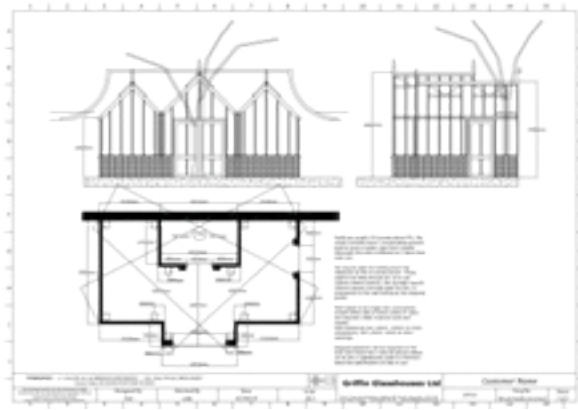
*“May I thank you from the entire Commando for your help and expertise in delivering what has to be the best greenhouse I have ever laid eyes on, I am sure the families will be very appreciative of it.”*

CAPTAIN LEWIS, 45 COMMANDO ROYAL MARINES, WOODLANDS GARDEN TRUST, ARBROATH









## DESIGNING YOUR DREAM GREENHOUSE

**Your perfect greenhouse is individually created for you.**

Whether you are interested in a greenhouse from our National Garden Scheme collection or something totally bespoke, we are happy to come and meet with you so that we can get to know you and your unique situation and guide you through all the decisions you need to make. Following our discussions, we produce a design to match your exact requirements using the latest Computer Aided Design (CAD) software. We are always happy to work with you to refine the design until you are fully satisfied with both the elements of the design and the cost. This means that you can be confident that you are getting the best greenhouse design possible for your particular budget.

## MAKING IT A REALITY

**Your greenhouse is manufactured by us in our own factory in Hampshire.** The design team work in the same building as the production team which means that we can control the whole process to ensure that our stringent quality standards are consistently achieved for every greenhouse. We always use our own installation team so that we can be sure that your new greenhouse is erected to our high specification. We have installed greenhouses for customers in the UK and all over the world and, depending on distance, we can undertake the complete building works for you including the removal and disposal of existing buildings. We are very happy to liaise with the local planning department and coordinate with other suppliers as part of a larger project if required – our aim is to make things as easy as possible for you.

## HAPPY EVER AFTER

**When you become the proud owner of a Griffin greenhouse, maintenance is simplicity itself.** All you need to do to keep your greenhouse looking as good as new and in pristine condition for your plants is to power wash it inside and out once a year. A little oil may also be applied to the door hinges as well as to the pinions (if you have rack and pinion ventilation). Importantly, as a valued customer, you are assured of our personal service in the future. You can count on us to help you in the event of any problem and with everything from the simple task of fixing a pane of glass through to adding accessories or even extending your greenhouse or moving it completely.

## HOW LONG WILL IT TAKE?

**Delivery timescales depend on each individual situation and we always try to work with you to ensure that your new greenhouse is delivered in expected timescales.**





*“From Ian’s initial enquiries you have been so helpful and positive, different from all of your competitors whom we felt were either too snooty to build a modest one for us or who do not offer anything but wood, no use to us in our declining years!!”*

DR & DR TWINN, LONDON

Dr & Dr Twinn had been looking for a quality greenhouse to adjoin a new brick shed in their long London garden. It needed to be an attractive feature but not dominating, in keeping with the period of their home and with enough growing space for their seedlings and summer salad crops.

Dr Twinn tells us *“For years we have looked seriously at them at Chelsea especially and never did I think I would actually have one. It fits the space perfectly and looks unobtrusive but elegant.*

*I cannot tell you how thrilled I am not only with the building but also with the charming, unobtrusive and sympathetic way in which you have worked on site. Thank you all again and again, for providing me with what I wanted and not making me feel that a modest greenhouse was an unachievable dream.”*



*“What a thrill it is to have my very own greenhouse”*



# The Gardener's Greenhouse



## A GREENHOUSE FOR AN ABUNDANT KITCHEN GARDEN

A larger greenhouse was required to replace an overworked free standing greenhouse in the kitchen garden in the Cotswolds. It was decided to place the new building against the wall to free up space further forwards for other planting. The greenhouse is used for cuttings and seedlings and so was fitted with benching and shelving throughout.

The Hon Mrs Baring comments *"I hope that some of our friends in Gloucestershire will be coming to you in the future. Thank you very much for your excellent and speedy work."*

*We are absolutely delighted with the greenhouse that you have made for us. It is something that we have wanted for years and we certainly are not disappointed! It has been a pleasure dealing with you."*

THE HON MRS BARING, GLOUCESTERSHIRE













*I would like to thank everyone at Griffin Glasshouses for all the help and advice I have been given, your customer service is second to none.*

MRS JEARUM, SURREY

As a gardener, you will greatly value the attention to detail in the many features of our greenhouses developed to create the very best environment for fruit, vegetables and flowers to thrive.

You will also appreciate the personalised service and integrity that have been the hallmark of our family business for over 50 years based on our experience of delivering the highest quality glasshouses, greenhouses and orangeries, designed to be easy to maintain and built to last a lifetime.

Available in any size, colour and style, Griffin creates beautiful bespoke greenhouses for the discerning gardener. We have also been selected by the National Garden Scheme to offer a collection of greenhouses with a donation for each of these greenhouses sold.

Please do get in touch at any stage of your project; it will be our pleasure to guide you every step of the way so that the greenhouse you've been dreaming about becomes your very own pride and joy.

---

*Please note that our products and services are continually developed to meet our customers' requirements and adapted according to each customer's individual situation.*

© Griffin Glasshouses Ltd 2019

---

© The National Garden Scheme.

Provided under licence granted by the National Garden Scheme.

Registered Charity No 1112664





*The Gardener's Greenhouse*



## GRIFFIN GLASSHOUSES

GREENHOUSES OF DISTINCTION

Griffin Glasshouses Ltd, Unit 3 Dean Farm Buildings, Bighton Hill, Ropley, Hampshire, SO24 9SQ, UK.

[www.griffinglasshouses.com](http://www.griffinglasshouses.com) · [sales@griffinglasshouses.com](mailto:sales@griffinglasshouses.com) · Tel +44 (0)1962 772512

